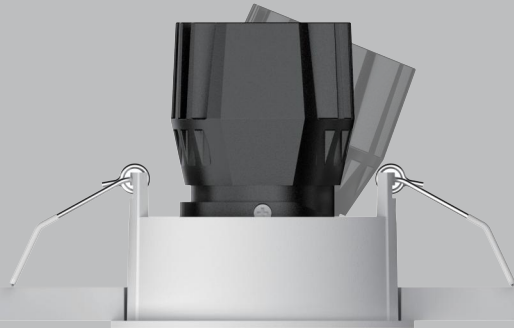


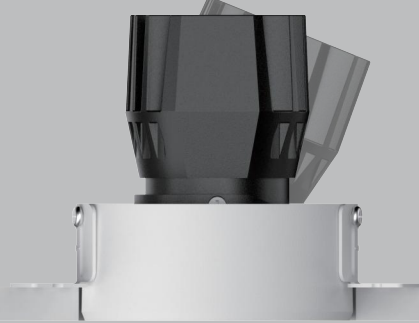
GAIA R75



GA75-R01QS



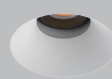
GA75-R01QT



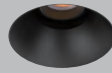
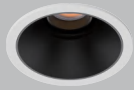
With Trim

Trimless

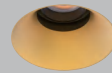
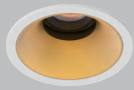
White



Black



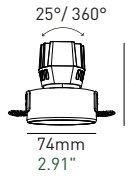
Golden



GA75-R01QS



GA75-R01QT



GAIA Family

### Basic Information

Model	GA75-R01QS/R01QT
Embedded Parts	With Trim/Trimless
Mounting	Recessed
Trim Finishing Color	White/Black
Reflector Color	White/Black/Golden
Material	Aluminum
Cutout Size	∅ 75mm
Light Direction	↓ 25° ⇔ 360°
IP Rating	IP20
Power	Max. 12W
Input Voltage	DC36V
Input Current	Max. 300mA

### Optical Parameters

Light Source	LED COB
Lumens	65lm/W 90lm/W
CRI	97Ra / 90Ra
CCT	3000K ● 3500K ● 4000K ●
CCT Changeable	2700K — 6000K 1800K — 3000K
Beam Angle	▮ 15° ▮ 25° ▮ 35° ▮ 50°
Shielding Angle	46°
UGR	< 13
LED Lifespan	50000hrs

Driver Voltage	AC100-120V AC220-240V
Driver Options	ON/OFF DIM TRIAC/ PHASE-CUT DIM 0/1-10V DIM DALI