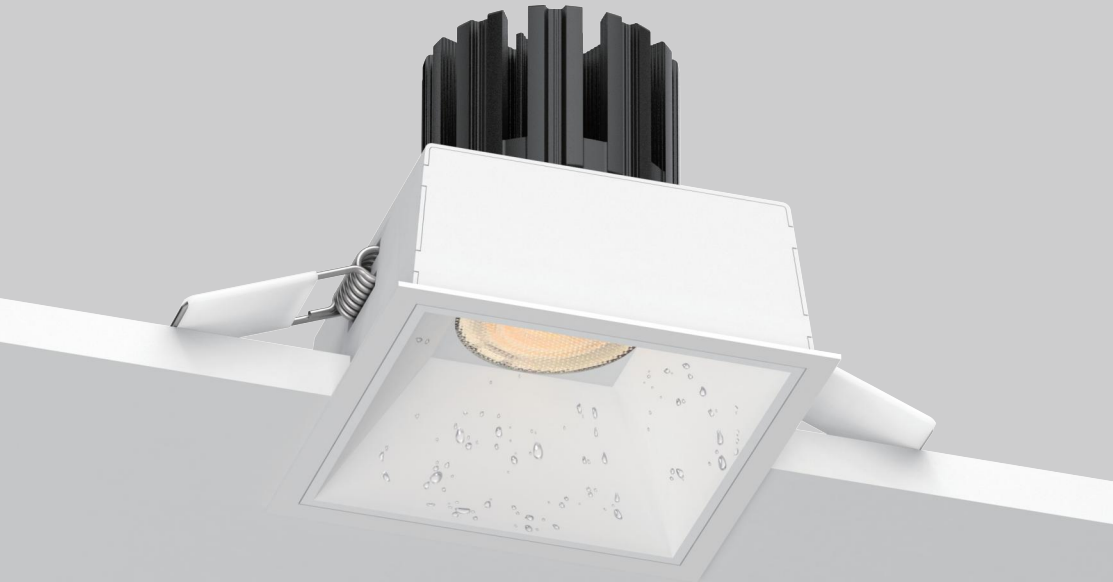


GEEK Square IP65



With Trim-White

With Trim-Black

White



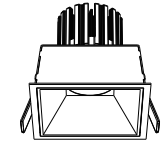
Black



Golden



GK75-S65QS



78mm
3.07"

82mm
3.23"

Geek Family

Basic Information

Model	GK75-S65QS
Embedded Parts	With Trim
Mounting	Recessed
Trim Finishing Color	White/Black
Reflector Color	White/Black/Golden
Material	Cold Forged Pure Alu. (Heat Sink)/Die-casting Alu.
Cutout Size	75*75mm
Light Direction	Fixed
IP Rating	IP65
Power	Max. 15W
Input Voltage	DC36V
Input Current	Max. 350mA

Optical Parameters

Light Source	LED COB
Lumens	65lm/W 90lm/W
CRI	97Ra / 90Ra
CCT	3000K ● 3500K ● 4000K ●
CCT Changeable	2700K — 6000K 1800K — 3000K
Beam Angle	15° 25° 35° 50°
Shielding Angle	35°
UGR	<16
LED Lifespan	50000hrs

Driver Voltage AC100-120V AC220-240V

Driver Options ON/OFF DIM TRIAC/ PHASE-CUT DIM 0/1-10V DIM DALI