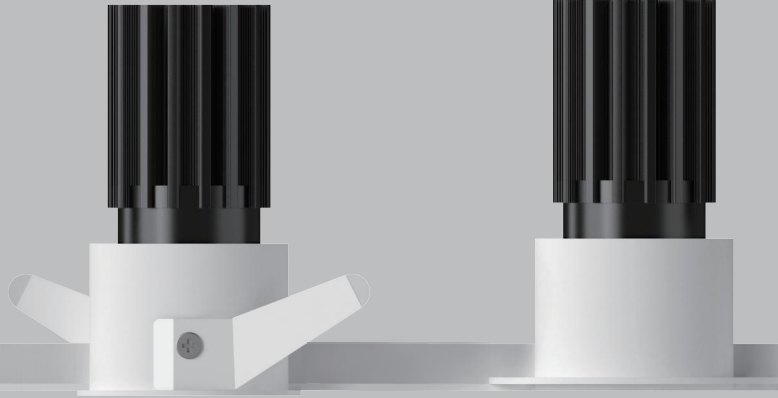


GENII Round IP44



GN45-R44QS

GN45-R44QT



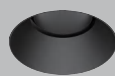
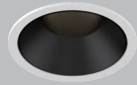
With Trim

Trimless

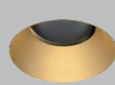
White



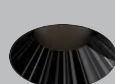
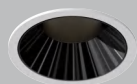
Black



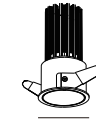
Golden



Black Mirror



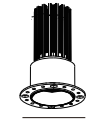
GN45-R44QS



50mm
1.97"

85mm
3.35"

GN45-R44QT



68mm
2.68"

85mm
3.35"

Basic Information

Model	GN45-R44QS/R44QT
Embedded Parts	With Trim/Trimless
Mounting	Recessed
Trim Finishing Color	White/Black
Reflector Color	White/Black/Golden
Material	Cold Forged Pure Alu. (Heat Sink)/Die-casting Alu.
Cutout Size	∅ 45mm
Light Direction	Fixed
IP Rating	IP44
Power	Max. 10W
Input Voltage	DC36V
Input Current	Max. 250mA

Optical Parameters

Light Source	LED COB
Lumens	65lm/W 90lm/W
CRI	97Ra
CCT	3000K ● 3500K ● 4000K ●
CCT Changeable	2700K — 6000K 1800K — 3000K
Beam Angle	▮ 15° ▮ 25° ▮ 35° ▮ 50°
Shielding Angle	50°
UGR	< 13
LED Lifespan	50000hrs

Driver Voltage	AC100-120V AC220-240V
Driver Options	ON/OFF DIM TRIAC/ PHASE-CUT DIM 0/1-10V DIM DALI